

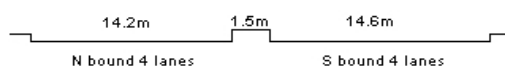
YEAR 2018

CORE STATION 5013

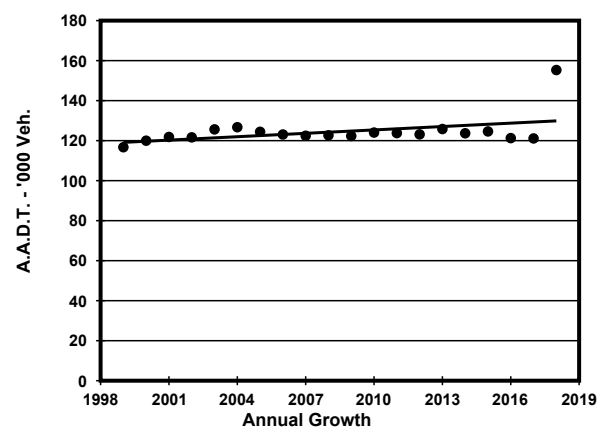
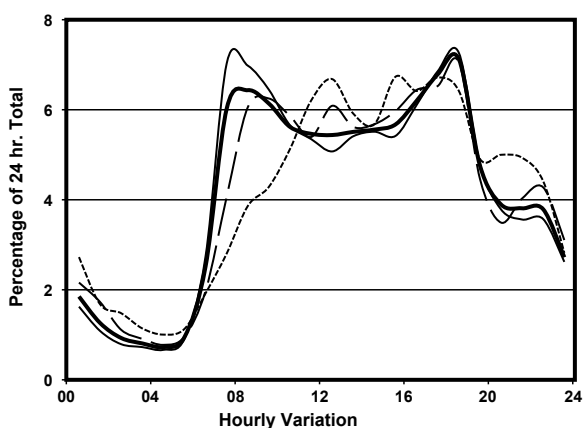
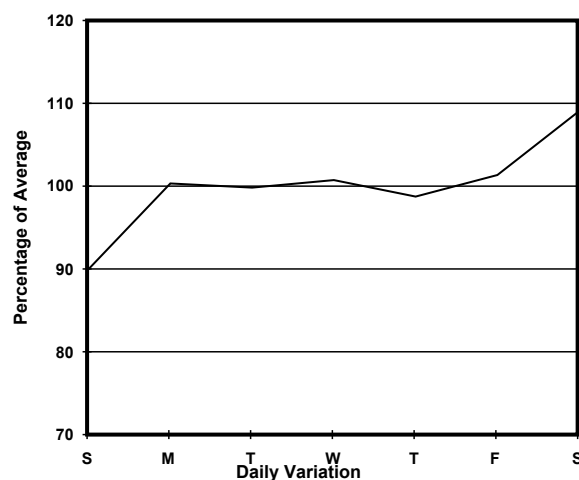
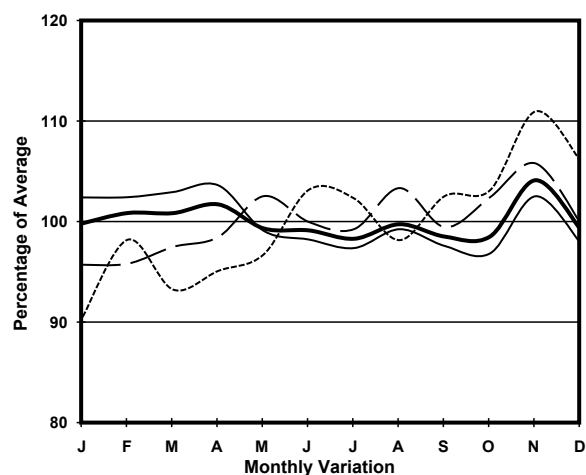
ROAD NETWORK MAJOR

ROAD TYPE EXPRESSWAY

LINK TOLO HIGHWAY (from NORTH OF MA LIU SHUI INT to YUEN SHIN RD INT)



1. TRAFFIC FLOW VARIATION AND GROWTH



— All day - - - - - Mon.- Fri. Sat. - . - . - Sun.

2. TRAFFIC CHARACTERISTICS (BY DIRECTION)

| Parameter | All - Day | Mon. - Fri. | Sat. | Sun. |
|--------------------------------------|-----------|-------------|-----------|-----------|
| SOUTH BOUND | | | | |
| A.A.D.T. | 78940 | 78590 | 85520 | 77060 |
| R 12 / 24 - % | 75.4 | 76.5 | 75 | 70.3 |
| R 16 / 24 - % | 88.8 | 89 | 89 | 87.5 |
| AM Peak Hour | 0700-0800 | 0700-0800 | 0900-1000 | 0900-1000 |
| One-way flow at AM peak hour | 5700 | 6870 | 6070 | 3590 |
| T - % (AM) | - | 12.5 | - | - |
| PM Peak Hour | 1800-1900 | 1800-1900 | 1800-1900 | 1700-1800 |
| One-way flow at PM peak hour | 5640 | 5580 | 6610 | 6050 |
| T - % (PM) | - | 10.2 | - | - |
| Prop.of commercial vehicles - 16 hr. | - | 15 | - | - |
| NORTH BOUND | | | | |
| A.A.D.T. | 76360 | 77850 | 84910 | 63200 |
| R 12 / 24 - % | 68.4 | 69.7 | 67 | 62.7 |
| R 16 / 24 - % | 87.6 | 88.6 | 85.5 | 84.3 |
| AM Peak Hour | 0800-0900 | 0800-0900 | 0900-1000 | 0800-0900 |
| One-way flow at AM peak hour | 4400 | 4850 | 4580 | 2440 |
| T - % (AM) | - | 13.7 | - | - |
| PM Peak Hour | 1800-1900 | 1800-1900 | 1600-1700 | 1800-1900 |
| One-way flow at PM peak hour | 5430 | 5790 | 5740 | 3870 |
| T - % (PM) | - | 9.1 | - | - |
| Prop.of commercial vehicles - 16 hr. | - | 14.8 | - | - |

3. OTHER INFORMATION AND COMMENT

4. Vehicle classification and occupancy - Monday to Friday

| Time | | Class of vehicle | | | | | | | | | |
|------------------------|-----|------------------|----------------|------|---------------|------|------------|-------|----------------|---------|------|
| | | Motor Cycle | Private Car | Taxi | Private LB | PLB | Goods veh. | | Non Fr. Bus | Fr. Bus | |
| | | | | | | | Light | M & H | | SD | DD |
| 0700-0800 | Pro | 2.9 | 58.7 | 8.1 | 0.9 | 0.4 | 14.5 | 9.0 | 3.2 | 0.1 | 2.2 |
| | Ocp | 1.0 | 1.2 | 2.0 | 5.8 | 12.6 | 1.4 | 1.1 | 13.2 | 1.0 | 66.5 |
| 0800-0900 | Pro | 2.1 | 61.0 | 7.4 | 0.6 | 0.3 | 15.2 | 9.0 | 2.6 | 0.0 | 1.8 |
| | Ocp | 1.0 | 1.3 | 2.0 | 4.1 | 10.6 | 1.5 | 1.2 | 10.6 | 0.0 | 60.6 |
| 0900-1000 | Pro | 2.1 | 47.9 | 8.3 | 0.3 | 0.4 | 23.4 | 12.5 | 3.0 | 0.0 | 2.1 |
| | Ocp | 1.0 | 1.2 | 2.0 | 2.1 | 7.6 | 1.3 | 1.2 | 11.9 | 0.0 | 30.8 |
| 1000-1100 | Pro | 1.6 | 45.1 | 8.4 | 0.4 | 0.3 | 24.0 | 15.6 | 2.8 | 0.1 | 1.8 |
| | Ocp | 1.1 | 1.3 | 1.8 | 1.4 | 11.2 | 1.4 | 1.4 | 16.4 | 1.0 | 32.0 |
| 1100-1200 | Pro | 1.4 | 43.1 | 7.3 | 0.5 | 0.3 | 28.1 | 15.6 | 2.0 | 0.0 | 1.7 |
| | Ocp | 1.1 | 1.2 | 2.1 | 1.9 | 7.7 | 1.4 | 1.4 | 12.6 | 0.0 | 35.0 |
| 1200-1300 | Pro | 1.5 | 46.0 | 8.3 | 0.9 | 0.3 | 24.6 | 14.0 | 2.8 | 0.0 | 1.7 |
| | Ocp | 1.1 | 1.3 | 2.1 | 3.2 | 7.8 | 1.4 | 1.2 | 11.7 | 0.0 | 34.0 |
| 1300-1400 | Pro | 1.2 | 45.3 | 7.6 | 0.6 | 0.4 | 27.3 | 13.9 | 2.3 | 0.1 | 1.4 |
| | Ocp | 1.0 | 1.3 | 2.1 | 1.5 | 12.5 | 1.4 | 1.2 | 13.4 | 1.0 | 41.3 |
| 1400-1500 | Pro | 1.5 | 44.5 | 5.6 | 0.6 | 0.4 | 27.7 | 15.8 | 2.5 | 0.1 | 1.4 |
| | Ocp | 1.1 | 1.4 | 2.1 | 2.1 | 10.6 | 1.4 | 1.4 | 9.4 | 1.0 | 36.1 |
| 1500-1600 | Pro | 1.2 | 47.9 | 6.8 | 0.8 | 0.4 | 25.0 | 14.1 | 2.3 | 0.0 | 1.6 |
| | Ocp | 1.0 | 1.3 | 2.1 | 2.8 | 9.9 | 1.4 | 1.3 | 6.0 | 0.0 | 30.2 |
| 1600-1700 | Pro | 1.7 | 45.9 | 6.6 | 1.0 | 0.4 | 26.4 | 12.9 | 3.2 | 0.1 | 2.0 |
| | Ocp | 1.1 | 1.3 | 1.8 | 6.6 | 8.5 | 1.4 | 1.3 | 10.9 | 1.0 | 34.0 |
| 1700-1800 | Pro | 3.0 | 53.3 | 6.1 | 0.8 | 0.4 | 22.8 | 8.6 | 3.1 | 0.1 | 2.0 |
| | Ocp | 1.1 | 1.2 | 1.9 | 3.8 | 13.8 | 1.3 | 1.4 | 9.8 | 1.0 | 47.6 |
| 1800-1900 Peak hour | Pro | 3.1 | 66.9 | 6.1 | 0.5 | 0.3 | 13.6 | 4.8 | 3.0 | 0.0 | 1.9 |
| | Ocp | 1.1 | 1.3 | 2.1 | 2.7 | 15.9 | 1.3 | 1.3 | 18.5 | 0.0 | 71.5 |
| 1900-2000 | Pro | 1.3 | 73.4 | 7.1 | 0.3 | 0.3 | 9.5 | 3.8 | 2.3 | 0.0 | 2.3 |
| | Ocp | 1.1 | 1.3 | 1.9 | 1.3 | 15.8 | 1.2 | 1.1 | 9.7 | 0.0 | 59.1 |
| 2000-2100 | Pro | 2.3 | 67.6 | 9.2 | 0.1 | 0.4 | 9.8 | 5.9 | 2.3 | 0.0 | 2.5 |
| | Ocp | 1.1 | 1.2 | 1.9 | 1.0 | 8.2 | 1.2 | 1.1 | 8.2 | 0.0 | 41.7 |
| 2100-2200 | Pro | 2.3 | 64.1 | 14.7 | 0.0 | 0.3 | 9.4 | 5.5 | 1.2 | 0.0 | 2.4 |
| | Ocp | 1.2 | 1.2 | 1.9 | 0.0 | 11.2 | 1.2 | 1.0 | 8.5 | 0.0 | 39.6 |
| 2200-2300 | Pro | 2.4 | 66.9 | 14.2 | 0.1 | 0.3 | 8.5 | 4.0 | 1.3 | 0.1 | 2.4 |
| | Ocp | 1.1 | 1.3 | 1.8 | 5.0 | 14.8 | 1.2 | 1.0 | 5.9 | 12.0 | 44.7 |
| 16 hours | Pro | 2.0 | 54.8 | 7.9 | 0.5 | 0.3 | 19.5 | 10.4 | 2.6 | 0.1 | 1.9 |
| | Ocp | 1.1 | 1.3 | 2.0 | 3.5 | 11.1 | 1.4 | 1.3 | 11.7 | 2.2 | 46.0 |

Legend

Pro. Proportion of vehicles in % (Sum may not add up to 100% due to figure rounding)*

Ocp. Average occupancy of vehicles including both driver and passengers*

M&H Medium and Heavy

***** All traffic data are collected from combined bounds except for one way traffic